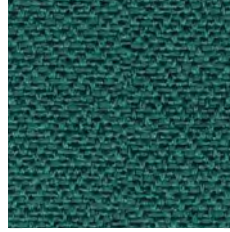


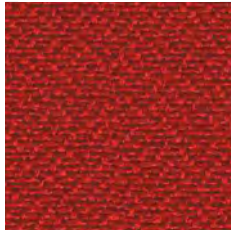
Reedfish *
10000011161

YA309

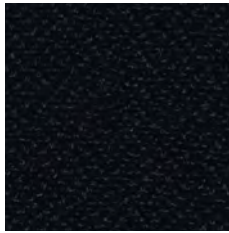


Snakehead
10000009650

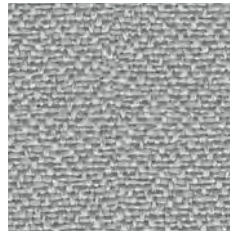
YA317



Arowan YA308
10000011835



Black Molly * YA319
10000010763



Oscar YA307
10000011162



Stingray YA311
10000009701

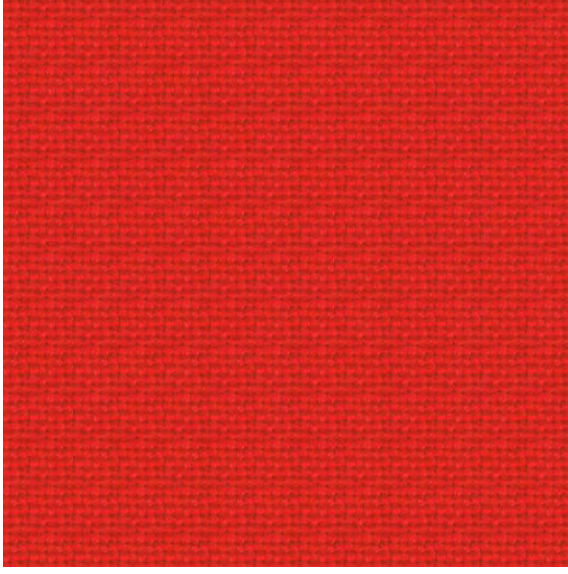
* Stoklu kumaş
Fabric available in stock

TR

Kumaşın Yapısı:	%100 Polyester
Ağırlık:	260g/m2 ±5%
Genişlik:	170 cm
Aşınmaya Karşı Dayanıklılık:	50.000 tur (5 yıl garantili)
Boncuklaşma	Islak: 4, Kuru: 4 (ISO 105 - X12)
Yanmaya Karşı Dayanıklılık:	Fiji EN 1021 - 1&2 Sigara & Kibrit Fiji BS 7176 Düşük Tehlike Fiji BS 476 Kısım 7 Sınıf 1 Fiji EN 13501-1 Yapıştırılmış Sınıf B, s1, d0 Fiji EN 13501-1 Yapıştırılmamış Sınıf B, s1, d2
Solmaya Karşı Dayanıklılık:	6
Sürtünmeye Karşı Dayanıklılık:	Islak: 4, Kuru: 4 (ISO 105 - X12)
Kumaşın Bakımı:	Düzenli aralıklarla vakumlu temizleme aleti yardımıyla temizlenmelidir. Nemli bezle silinerek temizlenebilir veya özel döşeme şampuanı ile yıkanabilir.
Çevresel duyarlılık	Oeko-Tex® 100 sertifikalı

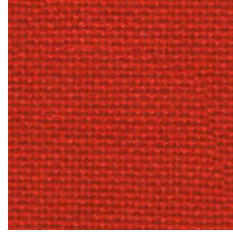
EN

Composition:	100% Polyester
Weight:	260g/m2 ±5%
Width:	170 cm
Abrasion Resistance:	50,000 Martindale cycles with a 5 year guarantee of wearability (full details available)
Pilling	Wet: 4, Dry: 4 (ISO 105 - X12)
Flammability	Fiji EN 1021 - 1&2 Cigarette & Match Fiji BS 7176 Low Hazard Fiji BS 476 Part 7 Class 1 Fiji EN 13501-1 Adhered Class B, s1, d0 Fiji EN 13501-1 Un-adhered Class B, s1, d2
Light Fastness:	6
Fastness to Rubbing:	Wet: 4, Dry: 4 (ISO 105 - X12)
Maintenance:	Vacuum regularly. Wipe clean using a damp cloth or shampoo using a proprietary upholstery shampoo.
Environment	Oeko-Tex® 100 certified



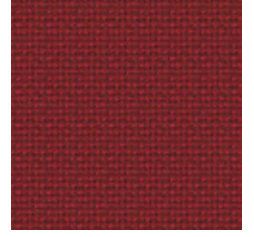
Red
10000004035

AD014



Cinnamon
10000003984

AD111



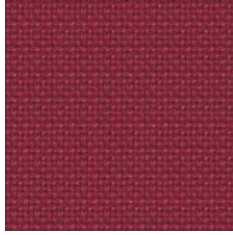
Wine *
10000001958

AD020



Beetroot
10000011158

AD116



Raspberry
10000004020

AD127



Tawny *
10000001758

AD098



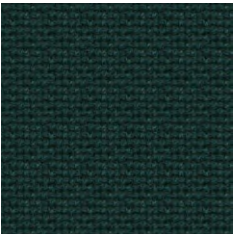
Pewter *
10000000419

AD072



Cranberry *
10000000331

AD005



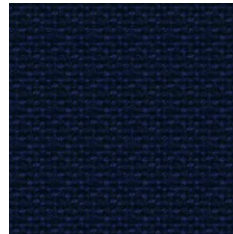
Aztec
10000011159

AD113



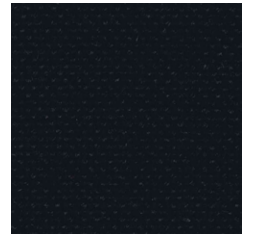
Fjord
10000002485

AD125



Nightshade
10000002481

AD011



Black *
10000002480

AD055

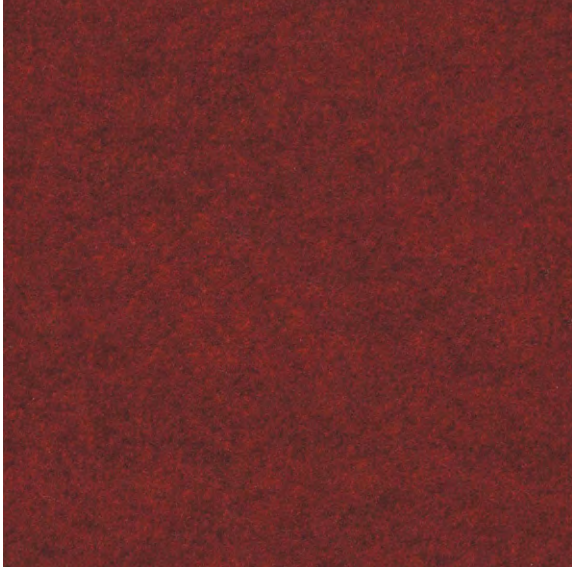
* Stoklu kumaş
Fabric available in stock

TR

Kumaşın Yapısı:	%60 Polypropilen, %30 Yün, %10 Viskoz
Ağırlık:	385g/m2 ±5%
Genişlik:	130 cm
Aşınmaya Karşı Dayanıklılık:	60.000
Boncuklaşma:	Islak: 3/4, Kuru: 4
Yanmaya Karşı Dayanıklılık:	BS EN 1021-1: 2006 – Yanan sigara BS EN 1021-2: 2006 – Kibrit ateşi eşdeğeri
Solmaya Karşı Dayanıklılık:	5
Sürtünmeye Karşı Dayanıklılık:	Islak: 3/4, Kuru: 4
Kumaş Bakımı:	Düzenli aralıklarla vakumlu temizleme aleti yardımıyla temizlenmelidir. Nemli bezle silinerek temizlenebilir veya özel dökme şampuanı ile yıkanabilir.

EN

Composition:	60% Polypropylene, 30% Wool, 10% Viscose
Weight:	385g/m2 ±5%
Width:	130 cm
Abrasion Resistance:	60.000
Boncuklaşma:	Wet: 3/4, Dry: 4
Flammability:	BS EN 1021-1: 2006 – smouldering cigarette BS EN 1021-2: 2006 – match flame equivalent
Light Fastness:	5
Fastness to Rubbing:	Wet: 3/4, Dry: 4
Maintenance:	Vacuum regularly. Wipe clean with a damp cloth or shampoo using proprietary upholstery shampoo.

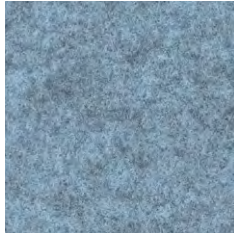


Chime *
10000012855

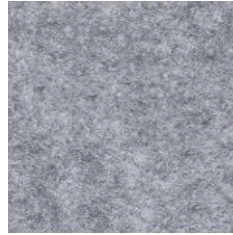
FHU10



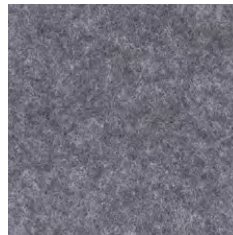
Vocal * FHU08
10000012854



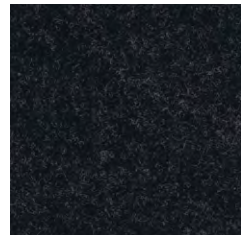
Audio * FHR06
10000012853



Beat * FHR03
10000012834



Music * FHU04
10000012836



Amp * FHR05
10000012856

* Stoklu kumaş
Fabric available in stock

TR

Kumaşın Yapısı	FHR: 72% Polyester, 18% Poliamit, 10% Viskoz FHU: 57% Polyester, 43% Poliamit
Ağırlık	200g/m2 ±10%
Genişlik	170cm
Aşınma	-
Boncuklaşma	-
Yanmaya karşı dayanıklılık	Sonus BS 476 Part 7 Sınıf 1 Sonus BS EN 1021- Sigara
Solmaya karşı dayanıklılık	5
Sürtünmeye karşı dayanıklılık	-
Kumaş Bakımı	Düzenli aralıklarla vakumlu temizleme aleti yardımıyla temizlenmelidir. Profesyonel kuru temizleme ile veya nemli bezle silinerek temizlenebilir.
Renk uyumu	-
Çevresel duyarlılık	-

EN

Composition	FHR: 72% Polyester, 18% Polyamide, 10% Viscose FHU: 57% Polyester, 43% Polyamide
Weight	200g/m2 ±10%
Width	170cm
Abrasion Resistance	-
Pilling	-
Flammability	Sonus BS 476 Part 7 Class 1 Sonus BS EN 1021- Cigarette
Light Fastness	5
Fastness to Rubbing	-
Maintenance	Vacuum regularly. Professionally dry clean or wipe clean with a damp cloth.
Colour Matching	-
Environment	-